

## SDHC Role & Responsibilities

---

SDHC is responsible for the habitat conservation planning efforts for the 210 Ramona Grasslands Mitigation Bank. SDHC follows the long-term management plan that was created for the Bank. Management includes regular monitoring events and activities to observe and maintain favorable conditions of the habitats, including maintaining an inventory of all species—native, invasive, rare and sensitive alike.

Responsibilities include:

- Monitoring and patrol
- Exotic species control
- Adaptive management
- Monitoring log reports
- Burrowing owl complexes



## Our Mission

---

To conserve and manage sensitive habitats and species while inspiring land stewardship through education and outreach.



Executive Director, Don Scoles

---

San Diego Habitat Conservancy  
2770 Historic Decatur Road, Suite 205  
San Diego, CA 92106  
Phone: 619-365-4839  
SDHC@sdhabitat.org

# The Ramona Grasslands Mitigation Bank

---



*San Diego Habitat Conservancy*



*Burrowing Owl (Athene cunicularia)*

## History of the Grasslands

The County of San Diego Parks and Recreation and the Nature Conservancy established the 3,521-acre Ramona Grasslands preserve that once was considered for housing and development.

San Diego Habitat Conservancy began managing the 210-acre Conservation Bank in 2017 as incorporated in the Multiple Species Conservation Program (MSCP). This commitment to preserve habitat and open space ensures that the Ramona Grasslands will remain undeveloped.

Vegetation communities preserved:

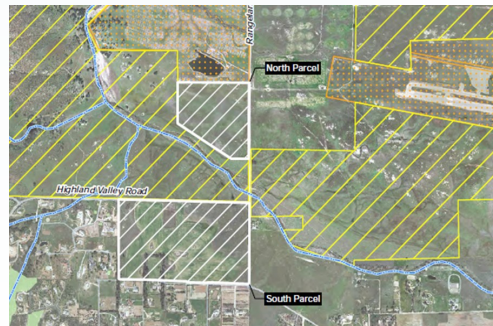
- Vernal pools
- Basin with San Diego Fairy Shrimp
- Southern willow scrub
- Mule fat scrub
- Freshwater seep
- Disturbed wetland and habitat
- Diegan coastal sage scrub
- Non-native grassland
- Eucalyptus woodland
- Developed land

## Burrowing Owls & The San Diego Safari Park Collaboration

In early 2021, burrowing owls will be released on the Preserve in hopes of re-establishing the populations in the area.

During Fall and Winter of 2020, SDHC will be collaborating with partners and preparing areas onsite to welcome these species of special concern to their new location. Large brush piles have been constructed to attract ground squirrels who will hopefully dig burrows that can be utilized by the owls and artificial burrows are also being built. The collaboration team is learning how to help these creatures nest and breed in our effort to bring Ramona a thriving and sustainable burrowing owl population.

We will be hosting a volunteer event on November 5th and would love to show new volunteers what we are doing to improve habitat. If you are interested please contact Kathleen, the Preserve Manager at:



[Kathleenp@sdhabitat.org](mailto:Kathleenp@sdhabitat.org)

## What Sensitive Species Live within and Around the Ramona Grasslands Mitigation Bank?

Be on the look out for Ferruginous hawk; loggerheaded shrike; northern harrier; peregrine falcon; white-faced ibis, and golden and bald eagles that are known to nest and forage in the area lands.

The Grasslands are also home to vernal pools and their rare plant assemblages that bloom in the spring. Many of the pools support the endangered San Diego Fairy Shrimp.

Portions of the Preserve are considered critical habitat for the arroyo toad and Stephen's kangaroo rat.

Two rare plant species on the grasslands are the southern tarplant, (*Centromadia parryi*) and the graceful tarplant (*Holocarpha virgata*).

*Southern Tarplant (Centromadia parryi ssp. australis)*



*San Diego Fairy Shrimp*